



SCIENCE FACTORY
Children's Museum & Exploration Dome

2300 Leo Harris Pkwy, Eugene OR • 541-682-7888 • www.sciencefactory.org
Exhibit Hall Hours: Wed. - Sun., 10 am - 4 pm, July & Aug. 10 am - 4 pm daily

50 years

[Join Our Mailing List!](#)

Quick Links

[Classes](#)

[Special Events](#)



[Become a Member](#)

Media Sponsor



Paint Sponsor

Quicklink 1
Quickli



nk 2
Quicklink 3



Quicklink 1
Quicklink 2
Quicklink 3

Sea Monsters and Dinosaurs, oh my!

Tot Discovery Days return:



Don't miss our very first Tot Discovery Day of the season. Join us for a day of bubble fun:

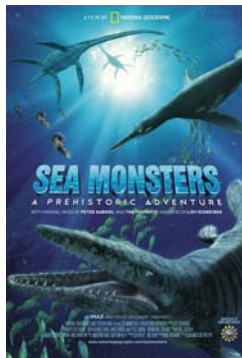
[Tot Discovery Day: Bubbles Galore](#)

Friday, September 2, 2011 from 9 am - noon

Thank you to **SELCO Community Credit Union** for sponsoring Tot Days this season.



Prehistoric Adventures Await!



Opening September 3 -

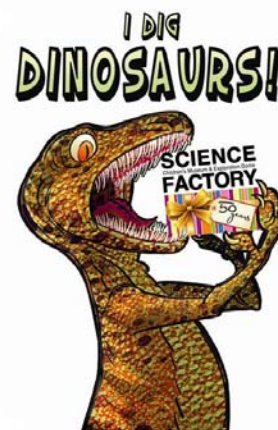
[Sea Monsters: A Prehistoric Adventure](#)

Narrated by Liev Schrieber, *Sea Monsters: A Prehistoric Adventure* takes audiences on a remarkable journey into the relatively unexplored world of reptiles that lived beneath the water during the dinosaur age. From fossil digs to larger-than-life visions of predatory chases in shallow seas, the film immerses audiences in a rarely explored environment. [Watch the trailer here...](#)

Opening September 28 -

[I Dig Dinosaurs!](#)

This exciting and interactive exhibit will let you explore your favorite dinosaurs hands-on! Come dig for fossils, design your own dinosaur, and stop at our Smell Station to check out what dinosaur breath might have smelled like. **Join us Saturday, October 1 from 5-9 PM for a Grand Opening Celebration.** The entire family is invited to enjoy the exhibit and view *Sea Monsters: A Prehistoric Adventure*. The event is \$2 for members, \$5 for non-members and food and drink will be available for purchase.



Currently in THE EXHIBIT HALL:

Brain Builder Bonanza & Energyville

Have you been challenged by our collection of mind-boggling puzzles yet? Tackle [Brain Builder Bonanza](#) through September 18...



Explore alternative energy sources with the ongoing [Energyville](#). Visitors pedal a bicycle and generate the energy necessary to propel a model train that travels through a detailed landscape created by the Willamette Cascade Model Railroad Club. The train stops at stations representing alternative energy sources while an accompanying video provides

information about each energy source. Be a part of this exhibit powered by the people!

Thank you to **Eugene Water & Electric Board (EWEB)** for supporting *Energyville* and our 2011 Summer Camps through Partners in Education grants.



Join Us to Celebrate 50 Years The Science Factory will celebrate 50 years of engaging children with science on Tuesday, November 1, 2011 from 6-9 pm at the Hilton Convention Center. *Tickets will be available for purchase beginning September 20 by phone, mail, in person or online.* Enjoy a festive dinner and cash bar with friends and take part in silent and live [auctions](#) run by Sid Voorhees. Then sit back and listen as our Guest of Honor, veteran National Public Radio (NPR) science correspondent and award-winning TV journalist **Ira Flatow**, presents *Communicating Science in a Science-Challenged World*. Please join us for this spectacular evening that supports science education for children in our community. [More info...](#)

Return to Regular Hours

As of September 1, we are open
Wednesday - Sunday, 10am - 4pm.

Special Open and Closed Days

The Science Factory is closed for Duck Football games on: **Saturday, Sept. 10 & Saturday, Sept. 17.**

The Exhibit Hall is closed for exhibit change **Monday, September 19 - Tuesday, September 27.** However, regularly scheduled weekend Exploration Dome shows will play **September 24-25.**

More Programming & Announcements



Science Pub @ Cozmic Pizza (for adults)

Thursday, September 8, 7 PM

My, What Big Antlers You Have! Ruminations on the Evolution of Headgear, with Edward Davis, Ph.D.

Why does animal headgear exist? When did it evolve, and how? And how does the study of headgear relate to us? Find out at this Science Pub.

[More info...](#)

Field Trips

The Science Factory continues its partnership with [Nearby Nature](#) to provide full day field trips for school groups. A limited number of scholarships for these field trips are made possible by a grant from [EWEB](#) to Nearby Nature, and by donations from the [Eugene Elks Lodge #357](#) and the [Emerald Empire Kiwanis](#) to The Science Factory. For more information or to schedule a trip, visit www.nearbynature.org.



Group Visit Scholarships & Community Memberships

Thanks to a grant from [KeyBank Foundation](#), we are excited to announce that we are expanding our scholarship program for school and local non-profit group visits in 2011-2012. For eligibility information and to apply for a scholarship, fill out the [field trip form](#) or call 541-682-7888.

A Community Membership is a new program that we are testing this year. Schools and non-profit organizations who serve children and families in need will be eligible to apply for an admission pass to the museum that their families and clients can check out. Check our web site soon for application details.

Win the Use of a Folding Tandem bike from Bike Friday!

Do you think having the chance to use a folding bicycle could change your family's life? Let us know how in our Bike Friday essay contest!

[Bike Friday](#), the Eugene-area manufacturer of revolutionary folding bicycles, invites you to share how having the use of a folding bike could change your family's life. The winner of the contest will receive the **use of a Bike Friday tandem folding bicycle for six months** between April and October of 2012 and see their adventures on the bike documented on Bike Friday's blog.



To enter, write an essay of 100 words or less about how having the use of a folding bicycle could change your family's life. All essays must be submitted to the Science Factory by **October 15, 2011**. Entry forms are available [here](#) or at the Science Factory.

Thank you Supporters

General Operations

Thank you to **Andrea Larson and James Eagle Eye**, and the **Eugene Marathon** for donations in support of General Operations. We appreciate you!

Exploration Dome

Thank you to **Café Yumm!** and **Jack O'Donnell** for donations in support of the Exploration Dome. We applaud you!

In-Kind

Thank you to **Pepsi-Cola Bottling of Eugene** and **Watkinson Laird Rubenstein Baldwin & Burgess, P.C.** for in-kind support. We salute you!

50th Anniversary Event

The following organizations and individuals have donated auction items in support of our 50th Anniversary event: **Bike Friday, Don Lown Photography, Elite Car Bath, Inc., Euphoria Chocolate Company, K Ridley Technology Corporation, Springfield Museum, Springfield Skate World, Sun Automotive, The Mill Casino Hotel and RV Park, and Three Rivers Casino and Hotel.** We thank you!

Thank You Volunteers

WOW, You Did It!

We would like to give a **T-REX-SIZED** thank you to all of our Eugene Celebration volunteers and especially **David Fulp** for creating our wacky life-size deinonychus and the design for our jungle-themed hats. Thanks to **Matt Harris** for helping to construct our hats. Thank you to **Bob Murray** for lending us the use of his truck. Thank you to **Matt Symonds** and **David Fulp** for leading the drumming on our march. A big thank you to **Billy Apolo** and **Dylan Pompel** for walking the legs of the dinosaur (and let me tell you that was not easy!). Thank you to the following families and friends who marched, drummed, wore lab coats/hats/masks, carried signage, took pics, waited patiently, and yes, held up or transported our dinosaur: **The Wilson family, the Ye family, the Tabor family, the Jacobsen family, the Gomes family, the Brindle family, the Gerhart family, the Foster family, the Thompson family, Carolyn, Emily, Darlene, Chloe, and Lily.** You are ALL *awesome*.

We would like to give heartfelt thanks to **LeeAnn Hansen**, who gives her time in the office every week. Thank you to **Billy Apolo, Maylita Brougher, Clare Hamblin, Sabrina Mowder, and Rick Nelson**, for volunteering in the Exploration Dome.

We want to send a giant thank you to our fabulous summer camp counselors in August, who assist us in providing the kids with memorable summer science adventures: **Emily Beckstrand, George Brooks, Hannah Glaser, Hana Kamata, Luke Lee, James Noeckel, Michelle Tan and Amber Zluticky.**

Also a big thanks to all who volunteered in the month of August as Exhibit Guides or for special events: **Wes McComb, Lindsay Miller, Sabrina Mowder, Rick Nelson, and Eugenia Siedler.**

Welcome New Members

It's a brand new year of science fun with:

Tiffany Kodak, Brandon Carrell, Rachel and Karl Kreutzer, Christina Jioras, Peggy Metzger, Kat Irwin, Kari Primo-Liddy, Brian Liddy, MaryBeth Rawlins, Eugene Bukowski, Marsha and Rick Holifield, Sarah and Matthew Ewing, Lorna Flormoe, Angie and Jan Hampton, Niels Pasternak, Jason Manning, Christy and John Bullock, Quanah and Duane Bennett, Amber Tamayo, Carol Granados, Margaret and Steven Recca, Heather and Ryan Austin, Tim and Linda Bogan, Shuching Yang, Jesse Meyerowitz, Amanda Orton, Glen and Laura Wolf, Jennifer Burbank, Melissa and Jeff King, Erin Owen, Eric Edgar, Team Amsberry, Elizabeth Bruno Wilkinson, Traci Thomson, Corey Daniel, Kim and Greg Hiatt, Erin and Earl Christison, Nina and Ken Rozell, Melysa Romstad, Jerry and Dora Hagel, Ethan and Ami Sletteland, Catharine and Todd Monrean, George Lucas Buhr, June Keay.

We hope you've enjoyed this issue of the Science Factory eNews. If you have thoughts, feedback, questions or just want to say hello, please email us at sfmarketing@sciencefactory.org.

We hope to see you soon!

Science Factory Staff

Science Factory Children's Museum & Exploration Dome

Regular Hours: Wednesday-Sunday, 10am-4pm

Phone: 682-7888

www.sciencefactory.org

[Forward email](#)



This email was sent to sfmarketing@sciencefactory.org by sfmarketing@sciencefactory.org | [Update Profile/Email Address](#) | Instant removal with [SafeUnsubscribe™](#) | [Privacy Policy](#).

Science Factory Children's Museum & Planetarium | 2300 Leo Harris Parkway | Eugene | OR | 97401